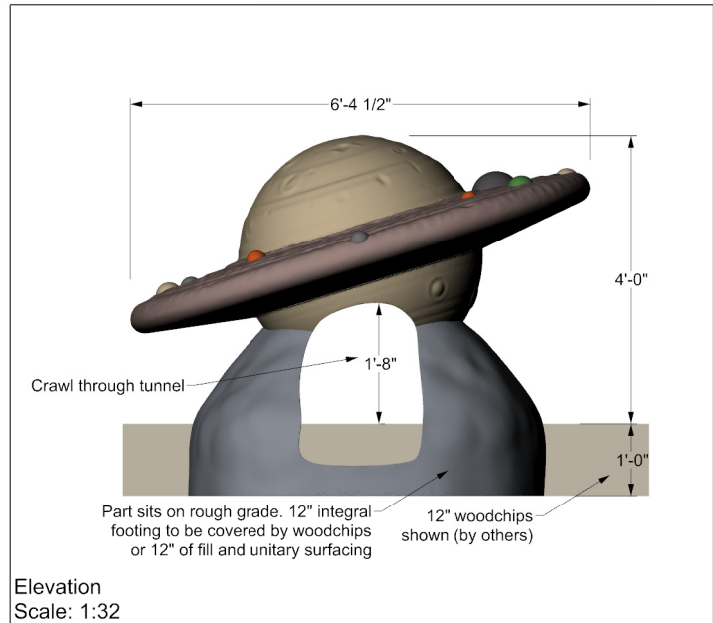
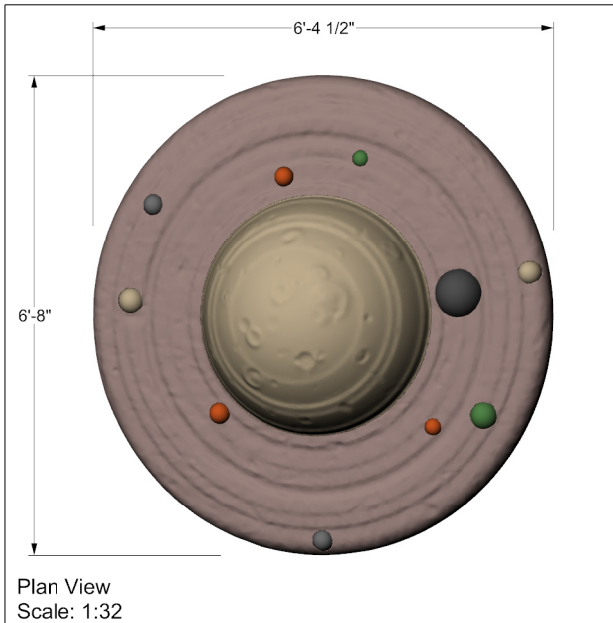


Saturn Climber



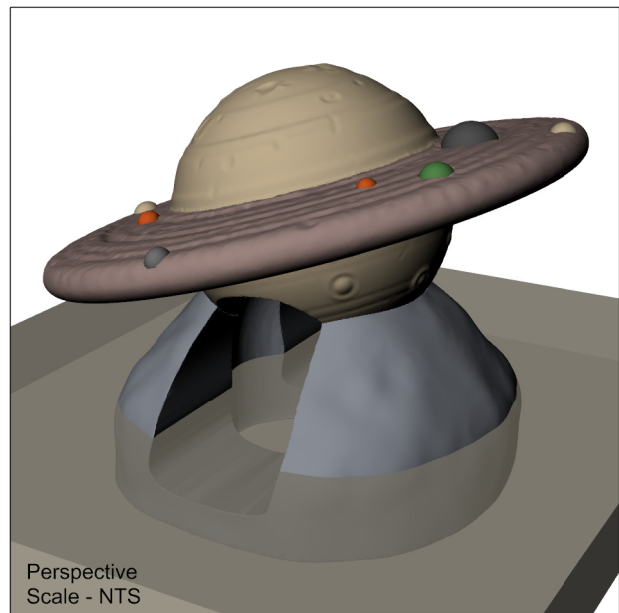
Notes:

Material: Imagacast
 Finish/Texture: Light Etch
 Sealer: Acrylic Concrete Sealer
 Concrete Color: Palm Springs Tan
 Stain Colors: Saddleback, Natural Gray, Black, Burgundy

For ages: 2-12
 Estimated Users: 6
 Footing: Integral to part
 Highest Des.Play Surface: 4'-0"
 Installation -Install using two slings under part.
 Weight - 8,500 lbs.

Local Building Departments may require additional site poured footings. These footings and associated engineering are not within the scope of this submittal
 Precast concrete, especially once sandblasted, will show cracks. This is not considered a defect unless the crack is structural in nature, meaning it effects the structural integrity of the part.

Install with crane or Reach Fork with straps. Follow all OSHA, local, State and Federal safety guidelines during installation. Use straps rated for weight of parts. Contact manufacture immediately to answer questions during installation.



Rep: Kelly Spence	Company: Miracle Play Systems	Phone: 800-264-7225
Contractor: tbd	Project: tbd	
Desc: Saturn Climber	Model # 11407	
Plant: 530-605-2664	Date: 4-18-19	Contact: Dan C
	Rev: na	Page: 1/2

UPC Parks
 530-605-2664
 www.upcparks.com